

Precision + Style

Collection **STRIPWOOD**

PROJECT 4

HOW TO INSTALL WALL PANELLING

A step-by-step guide to creating a feature wall within your home, using Richard Burbidge mouldings and basic woodworking tools and techniques.



TIME REQUIRED

Planning: 2 hours
Sawing & fitting: 1 hour



TOOLS REQUIRED

- 12 x 96 x 2400mm Pine Stripwood
- Tape Measure
- Pencil
- Paper
- Laser Level
- Ladder
- Saw
- Mitre Box
- Sandpaper
- Grab Adhesive*
- Nail Gun
- Nails
- Decorators Caulk
- Paint
- Primer**
- Paint Brush
- Paint Roller



SAFETY

Use a pipe and cable detector before nailing or drilling. For safety wear protective gloves, glasses and knee pads. When using a mitre box it's always a good idea to fix the box to a secure surface, to allow for both hands to be free when sawing. Ensure you do not drill directly above or below light switches or power sockets. Be sure to follow manufacturer's instructions when using all tools and materials

*You may need to ventilate the room. Read adhesive's instructions.

**May be needed if your paint requires primer.

For further information or to find your nearest stockist visit: www.richardburbidge.com

For technical support call: **01691 678 212**

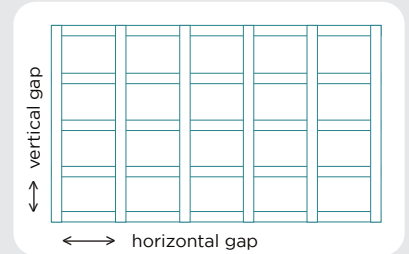
PROJECT 4

HOW TO INSTALL WALL PANELLING

There are hundreds of different designs you can create with wall panelling, in this guide we take you through the steps of installing the classic but contemporary square panel design to create a feature wall.

STEP 1. Planning and measuring

Firstly, you will need to measure the walls every length and width, making a note of any fittings you will need to avoid. Draw your design with the measurements on some paper, making sure to plan an equal gap horizontally and vertically. The next step is to transfer your measurements and plan to the wall, using a pencil, tape measure and laser level mark where each panel piece will be, while bearing in mind the width of the panel. We also recommend removing skirting and architrave on the feature wall to achieve a professional finish.



STEP 2. Choose your Richard Burbidge moulding

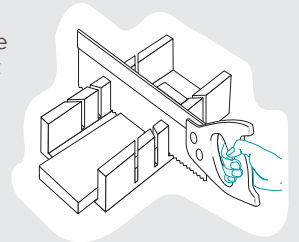
Richard Burbidge mouldings are of the highest quality and can totally transform the look and character of a whole room. Our stripwood range has a vast selection of panel sizes to choose from. For this project we are using a 12 x 96 x 2400mm pine panel that creates the classic square feature wall you will have seen everywhere on Pinterest and Instagram!



Pine STW6027
12 x 96 x 2400mm

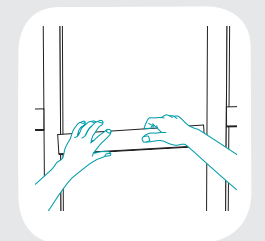
STEP 3. Cut the panels to length

The next step is to cut your panels to length. Our stripwood mouldings are 2400mm in length which is the average height of most rooms, so you won't need to cut the mouldings that are being placed vertically. Using a saw and mitre box at a 90 degree angle, carefully cut the panels that will be horizontally placed according to the measurements you noted from step 1. Repeat this process to all of the horizontal panels, then lightly sand the ends until smooth. If your wall is not 2400mm in length then you will need to cut the moulding according to your walls measurements using this same method.



STEP 4. Apply the panels to the wall

When applying the panels to the wall start with the vertical panels, then the horizontal panels. To apply the panels to the wall we recommend nails and adhesive for extra security and hold. Place your panel onto the wall where you marked out in step 1, use a laser level to ensure the panel is straight, then apply strong hold adhesive to the back and apply to the wall, next use a nail gun to secure the panel to the wall. Repeat this process for all panels. Ensure you use a pipe and cable detector before nailing or drilling into any walls. If you are unsure if it is safe to nail into your wall, opt for a strong adhesive instead. Once you have applied the panels, use decorators caulk to patch any gaps, cracks, or holes, then sand prior to finishing.



STEP 5. Add your own creative flair

This project can be customised to work with any décor and colour scheme. There are many different ways you can add your own creative flair to this project. You can choose to paint the whole wall one colour, or you can use a few different paint colours, you can paint dots, stripes or squares, or even draw your own unique design to really make this wall the focal point of your home. There's an endless list of ways that you could choose to add your own creative flair.

